

Phylum

Mollusca

(5 Classes)

Scaphopoda

Cephalopoda – Head foot

Pelecypoda (Bivalvia) – Hatchet foot

Polyplacophora – Many plates on a foot

Gastropoda – Stomach

Scaphopoda - "tusk shells"



Wampum Indians, head in the sand, captacula, eat foraminiferans, respire through mantle as have no gills.

I see Spot very well

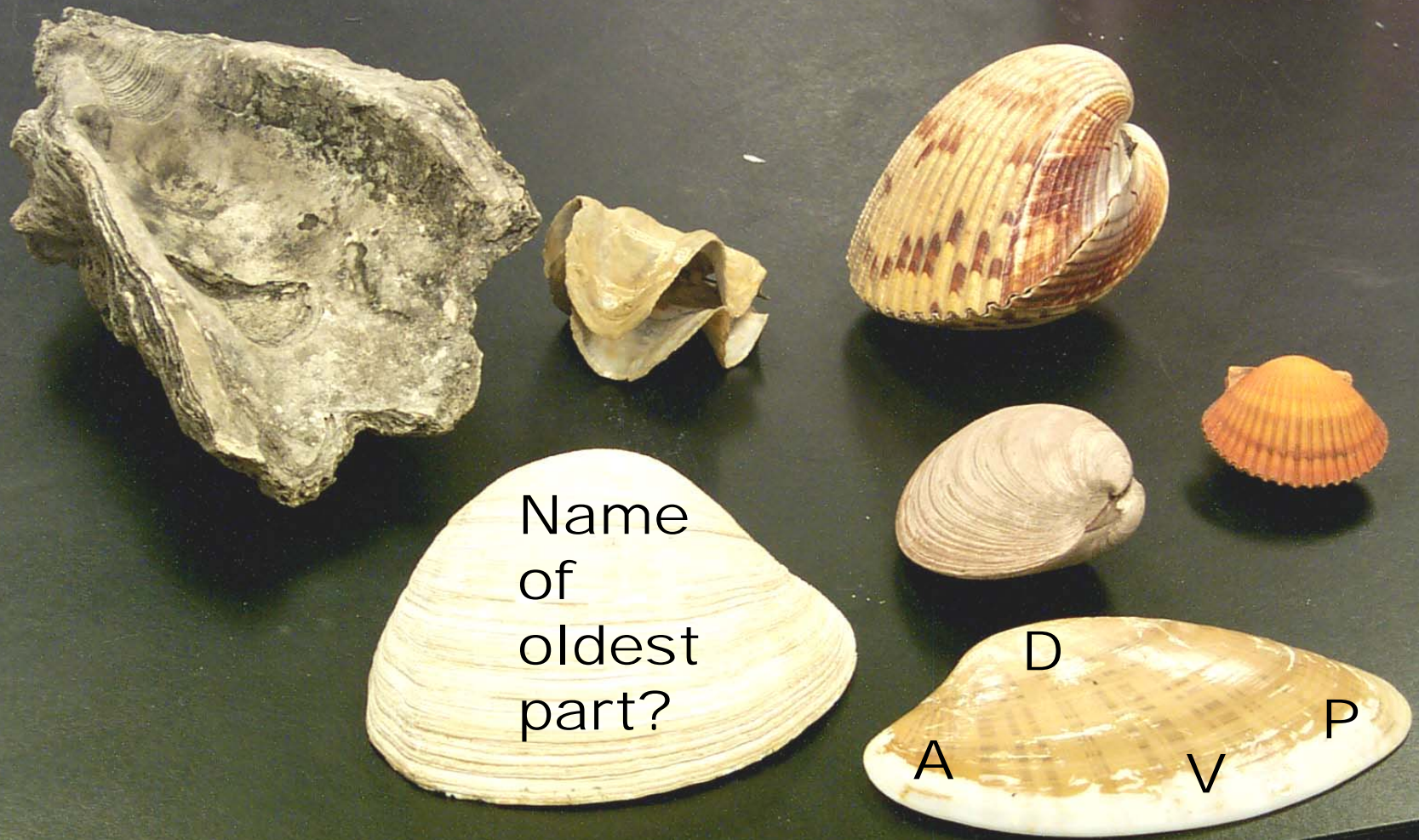
I make make spots all over me in order to hide!

I swim faster than Spot



My arms are derived from the Gastropod foot

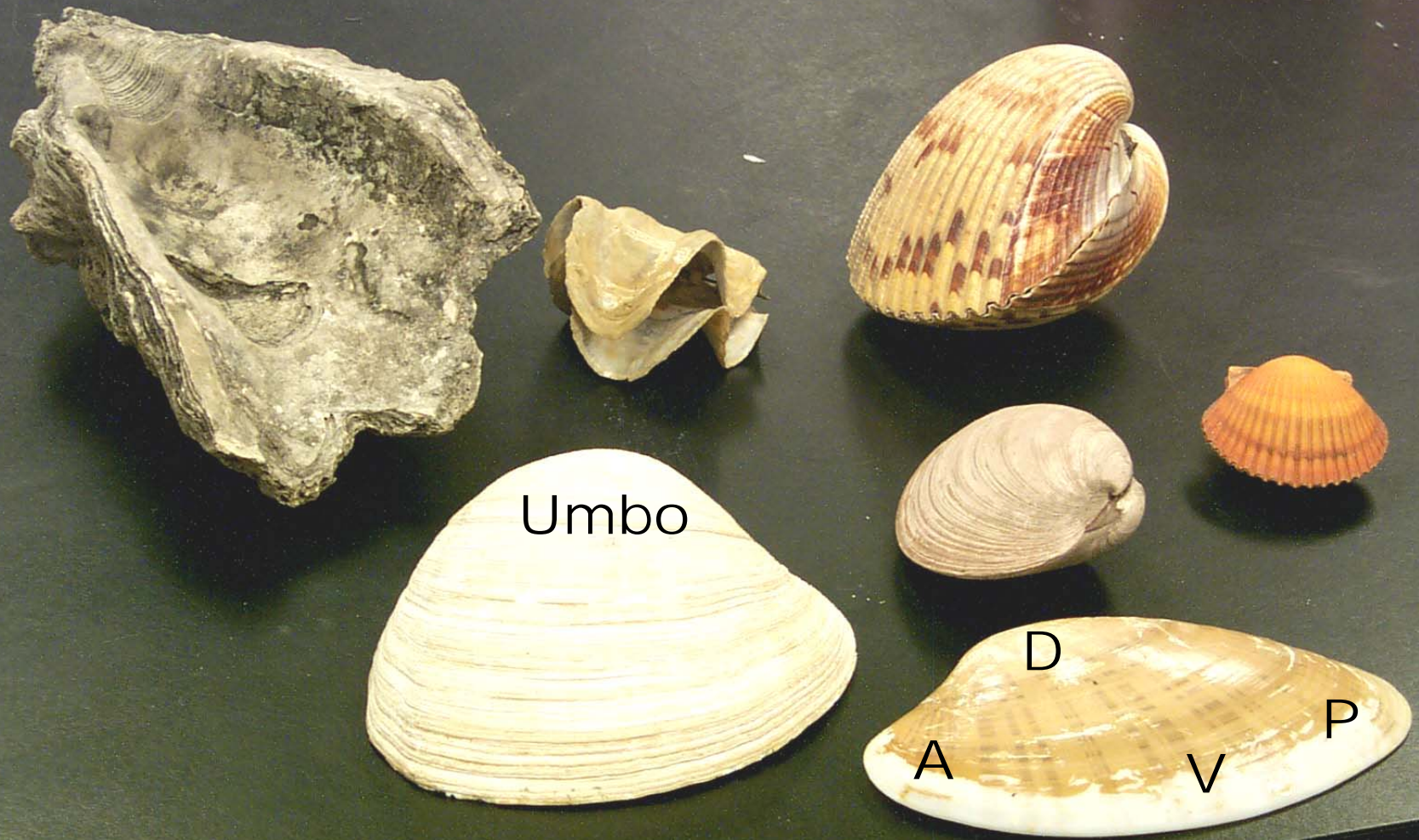
Class **Cephalopoda** - Octopuses, Squid, Nautilus, Cuttlefish...beak, pen, ink sac, chromatophores, jet propulsion.....dissection.



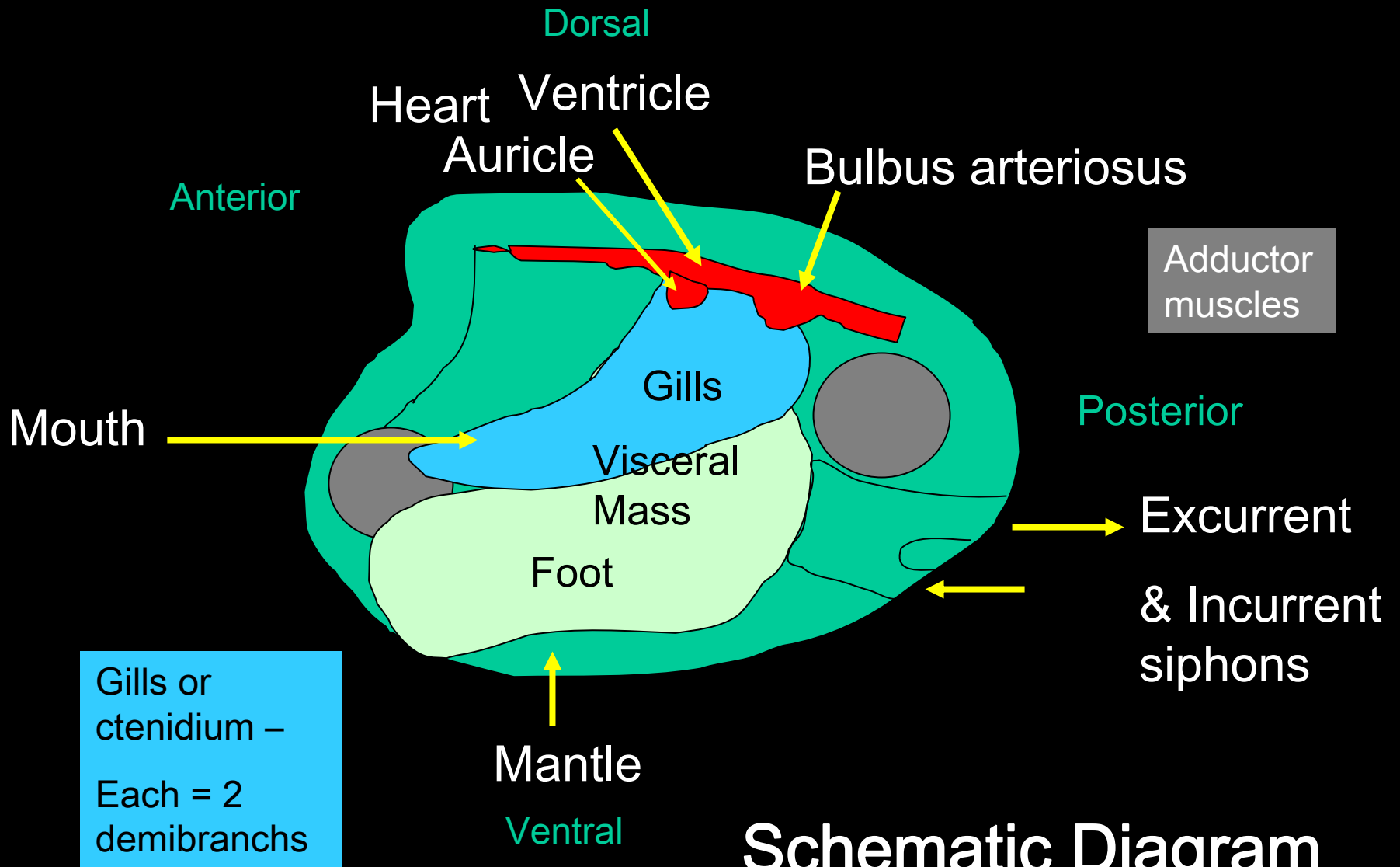
Name
of
oldest
part?

A D V P

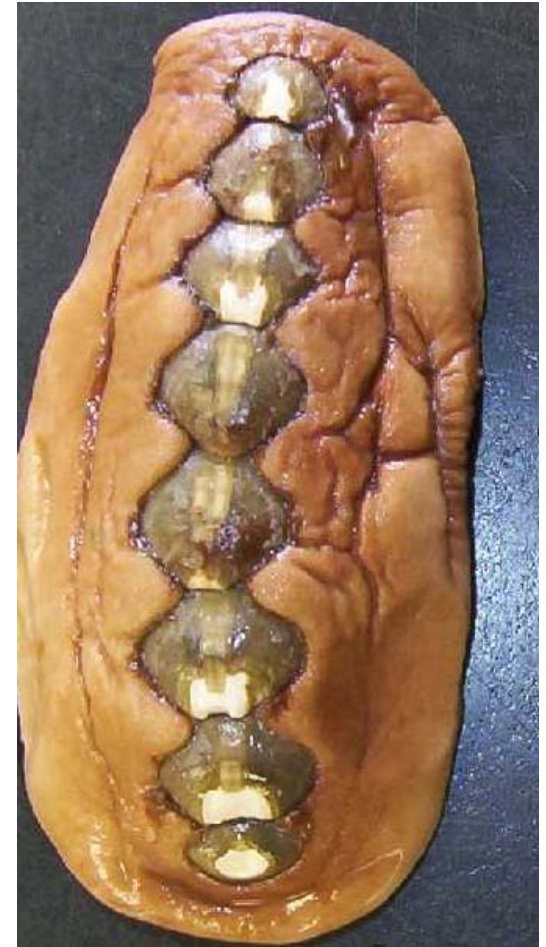
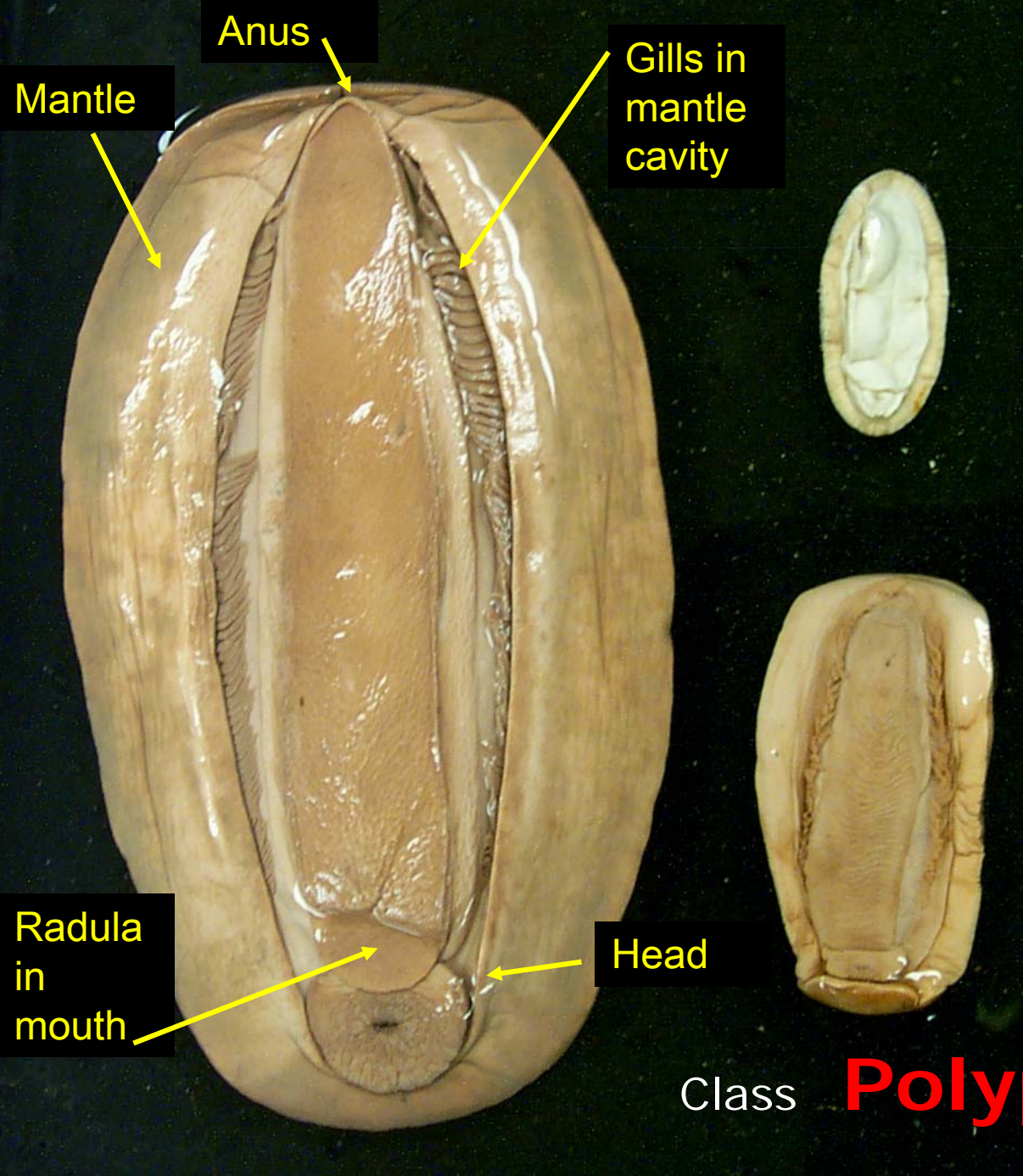
Bivalvia or **Pelecypoda** - clams, scallops etc.
filter feeders, bivalved shells..... dissection



Bivalvia or **Pelecypoda** - clams, scallops etc.
filter feeders, bivalved shells..... dissection



**Schematic Diagram
of a Clam Dissection**



Chitons radula, 8 plates

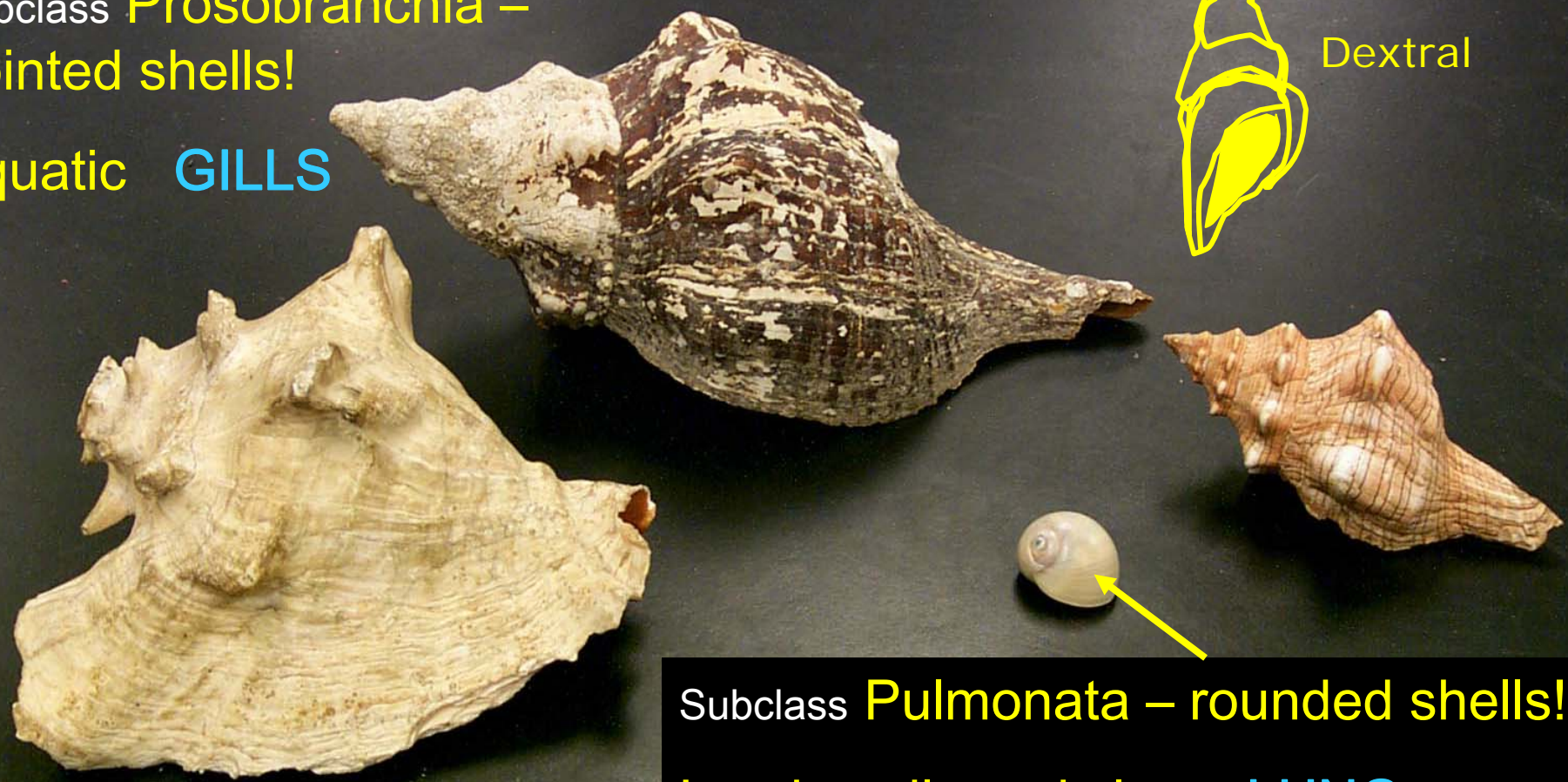
Class **Polyplacophora**

Subclass **Prosobranchia** –
pointed shells!

Aquatic **GILLS**



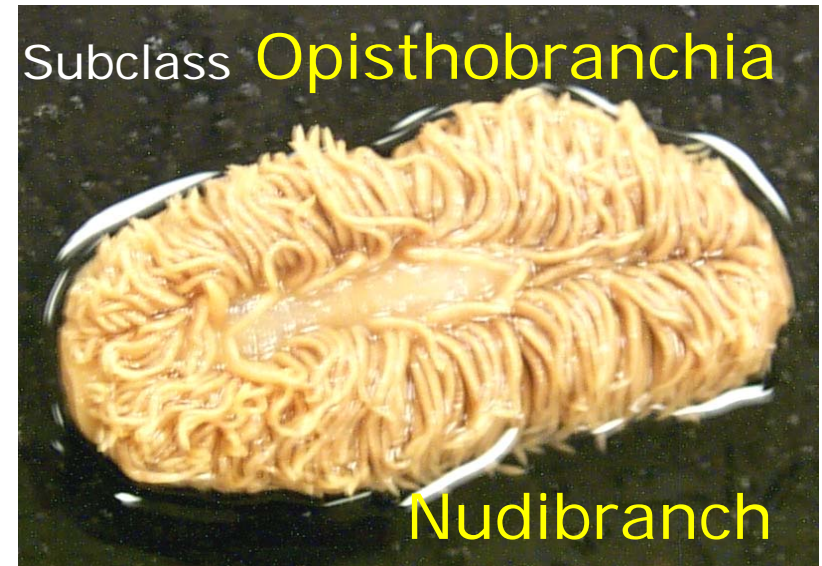
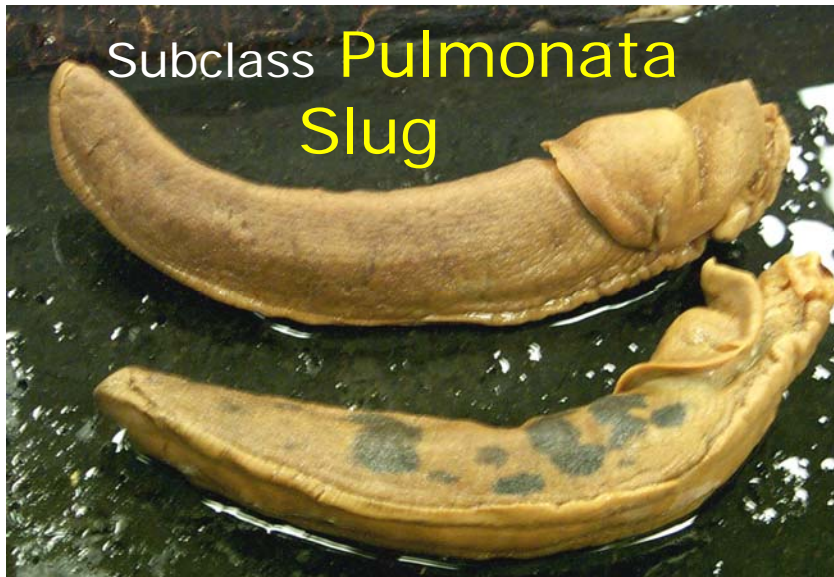
Dextral



Subclass **Pulmonata** – rounded shells!

Land snails and slugs **LUNG**

Gastropoda - snails, conchs
torsion/coiling, radula, operculum.



Detorsion

If it looks strange,
chances are its
something from
Class **Gastropoda**